

MXview Lite

Easy browser-based network management software



- > Auto device discovery
- > User defined topology map
- > Network troubleshooting with comprehensive event logs
- > Remotely accessible through user friendly web browser
- > Batch deployment of configuration and firmware for Moxa network devices

Introduction

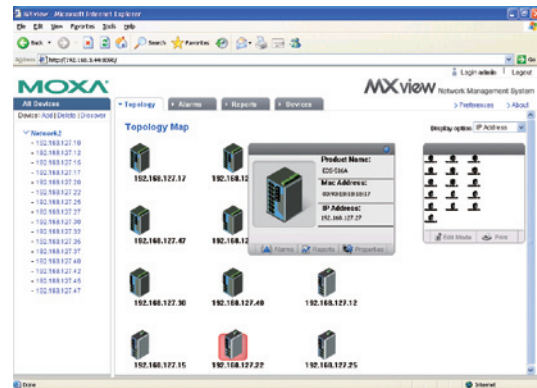
Moxa's MXview Lite network management software is designed for configuring, monitoring, and troubleshooting Moxa network components connected to industrial Ethernet networks. MXview Lite provides an integrated management platform that can discover

Moxa network components installed on multiple subnets. All selected network components can be managed graphically by web browser from both local and remote sites—anytime and anywhere.

Topology Visualization

After devices are discovered, a built-in editing tool can be used to manually draw a topology map of Moxa's managed Ethernet switches. The topology map ensures easy management and troubleshooting of your industrial Ethernet networks. Device information, such as device status and settings, will also be included on the topology map.

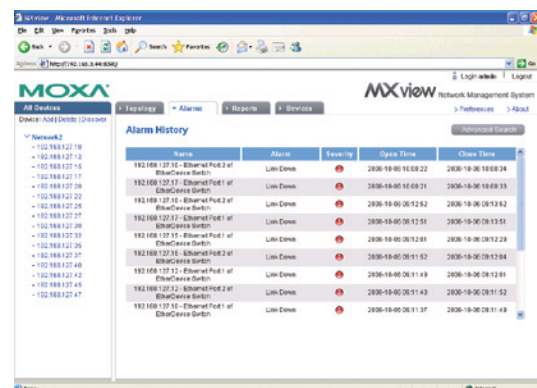
- Automatic discovery (supports searching multiple subnets)
- Manually add or delete a single Ethernet switch
- Editable topology map
- Popup menu on device thumbnail for easily configuring devices or getting device information rapidly
- Color-coded icons on the topology map indicate the status of abnormal devices



Event Management

Administrators can set up event threshold definitions. MXview Lite will use the definitions to display warning messages on a monitor, or the messages will be sent to network administrators via email. The alarm information is recorded in a database, which users can check to keep the network running smoothly.

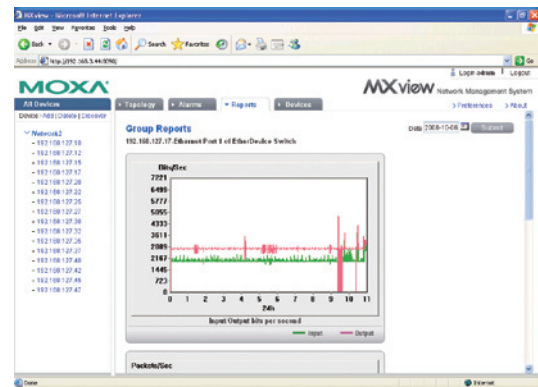
- Notification based on an event, including SNMP failure, link down, bandwidth utilization, packet error rate, and collision rate
- Notification can be sent via email
- Event threshold can be defined by the administrator
- Alarm history list and advance search function of the event log
- Color-coded icons for real-time status



Traffic Monitoring

MXview Lite generates port-based traffic statistics for selected ports on the network components. The statistics can be viewed graphically in a chart, and the statistics for two different ports can be displayed on the same page for easy network analysis.

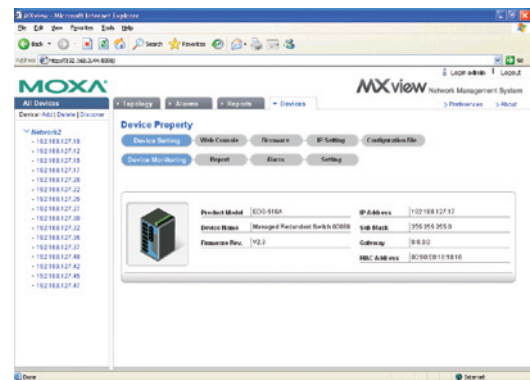
- Network traffic statistics for Moxa's managed Ethernet switches
- Multiple statistics charts can be displayed on a single page



Device Configurations

MXview Lite is an integrated tool that can manage a group of Moxa Ethernet switches over industrial Ethernet networks. Updating firmware for a group of Ethernet switches using a single tool is now possible using MXview Lite. The individual configuration file for each Ethernet switch can be stored and deployed when the Moxa Ethernet switch is replaced during maintenance, reducing system downtime.

- 100% configuration of Moxa switches by web console
- Centralized firmware deployment for Moxa's managed Ethernet switches
- Restore and deploy configuration files over the network



System Requirements

Software Requirements	
CPU	Intel Core 2 Duo 2.4 GHz or above
RAM	1G or above
Hard Disk Space	1G or above
Hardware Requirements	
Operating System	Windows XP Professional/2000/2003
Browser	IE 6.0 or higher
Language Support	
User interface and user's manual	English

Ordering Information

Available Models

MXview Lite: Browser-based network management software that supports monitoring 32 units of Moxa's managed Ethernet switches

Note: Registered users of Moxa's managed Ethernet switches can download MXview Lite for free from from Moxa's website.